

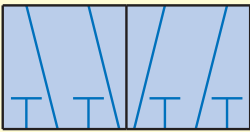
The 3 Base Modular Valves



- Can be used as a:
- 2-way normally closed valve
 - 2-way normally open valve
 - 3-way normally closed valve
 - 3-way normally open valve
 - 3-way diverter valve
 - 3-way selector valve



- Can be used as a:
- 4-way fully ported valve
 - Dual 2-way valves (one N.O. & one N.C.)
 - Dual 3-way valves with common exhaust (one N.O. & one N.C.)

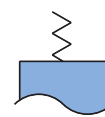


- Can be used as a:
- 6-way fully ported valve
 - Dual 2-way normally closed valve
 - Dual 2-way normally open valve
 - Dual 3-way normally closed valve
 - Dual 3-way normally open valve
 - Dual selector valve

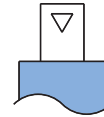
* R-436 and R-421 are exceptions to the Basic 3

Versatility is the key when it comes to Clippard's Minimatic® Modular Valves. Available in an unlimited variety of directional, flow, pressure and special control valves - each in a valve body designed to mount and link together with a simple piping system. The piping system eases assembly and plumbing, resulting in reduced labor costs, errors in installation, and the potential for plumbing leakage. In addition, multiple valve elements can be contained in a single body; providing incredible flexibility and variety to accomplish a myriad of control challenges. The Minimatic modular valves are the supreme "Plug and Play" devices for pneumatic applications.

Actuation Methods



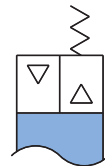
Spring Return



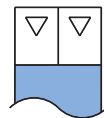
Air Pilot



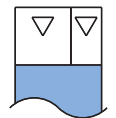
Spring & Auxiliary Pilot



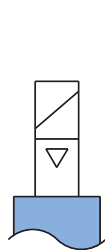
Removable Spring & Auxiliary Pilot



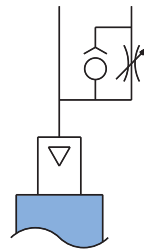
2 Air Pilots "OR"



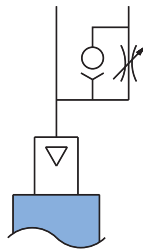
Differential Air Pilots



Solenoid Piloted



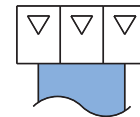
Delay Out From Air Pilot



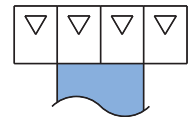
Delay In To Air Pilot



Low Pressure Air Pilot



3 Air Pilots "OR"



4 Air Pilots "OR"



Independent Shuttle Valve & Air Pilot



Shuttle Valve To Air Pilot



Shuttle Valve To Low Pressure



Delay To Air Pilot



Bleed Pressure Pilot



Fluidic Interface Pilot